

# O Magnum Mysterium

William Byrd

Andante ♩ = 80

Violoncello

Violoncello

Violoncello

Violoncello

6

Vc.

Vc.

Vc.

Vc.

11

Vc.

Vc.

Vc.

Vc.

16

Vc.

Vc.

Vc.

Vc.

This system contains measures 16 through 20. It features four staves of music. The top staff is in treble clef with a 12/13 time signature. The three lower staves are in bass clef. The music includes various note values, rests, and accidentals such as sharps and flats. A slur is present over the first two notes of the top staff in measure 16.

21

Vc.

Vc.

Vc.

Vc.

This system contains measures 21 through 25. It features four staves of music. The top staff is in treble clef with a 12/13 time signature. The three lower staves are in bass clef. The music includes various note values, rests, and accidentals such as sharps and flats. A slur is present over the last two notes of the top staff in measure 25.

26

Vc.

Vc.

Vc.

Vc.

This system contains measures 26 through 30. It features four staves of music. The top staff is in treble clef with a 12/13 time signature. The three lower staves are in bass clef. The music includes various note values, rests, and accidentals such as sharps and flats. Slurs are present over the first two notes of the top staff in measure 26 and the last two notes of the top staff in measure 30.

31

Vc.

Vc.

Vc.

Vc.

This system contains measures 31 through 35. It features four staves of Violoncello (Vc.). The music is in 12/8 time. The first staff (treble clef) begins with a half note G4, followed by quarter notes A4, B4, and C5. The second staff (bass clef) has a whole rest in measure 31, then quarter notes G2, A2, B2, and C3. The third staff (bass clef) starts with quarter notes G2, A2, B2, and C3, followed by a whole rest in measure 32. The fourth staff (bass clef) begins with quarter notes G2, A2, B2, and C3. The system concludes with a double bar line.

36

Vc.

Vc.

Vc.

Vc.

This system contains measures 36 through 40. It features four staves of Violoncello (Vc.). The music is in 12/8 time. The first staff (treble clef) starts with a dotted quarter note G4, followed by eighth notes A4, B4, and C5. The second staff (bass clef) has a whole rest in measure 36, then quarter notes G2, A2, B2, and C3. The third staff (bass clef) begins with quarter notes G2, A2, B2, and C3, followed by a whole rest in measure 37. The fourth staff (bass clef) starts with quarter notes G2, A2, B2, and C3. The system concludes with a double bar line.

41

Vc.

Vc.

Vc.

Vc.

This system contains measures 41 through 43. It features four staves of Violoncello (Vc.). The music is in 12/8 time. The first staff (treble clef) starts with a half note G4, followed by quarter notes A4, B4, and C5. The second staff (bass clef) has a whole rest in measure 41, then quarter notes G2, A2, B2, and C3. The third staff (bass clef) begins with quarter notes G2, A2, B2, and C3, followed by a whole rest in measure 42. The fourth staff (bass clef) starts with quarter notes G2, A2, B2, and C3. The system concludes with a double bar line.

# O Magnum Mysterium

Violoncello

William Byrd

Andante  $\text{♩} = 80$   
4



10



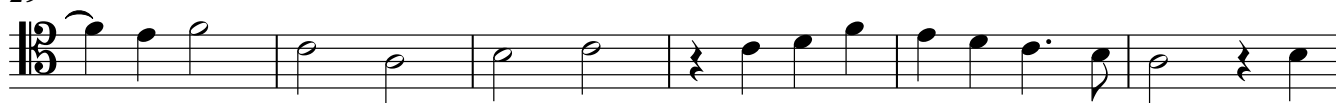
16



23



29



35



40







